

BLACK FISHER BOT

COMPLETE GUIDE

Dear user:

The importance of each step is critical because it is a pixel bot.

Please follow this guide 100% step by step & Play the game easier with black Fisher BOT.

CONTENT

SYSTEM SETUP	3
LOGIN TO BOT	4
GAME SETUP.....	5
BOT SETUP.....	6
EXTRA SETTINGS	9
VARIABLE ERROR	12
CONFUSION SOUND.....	12

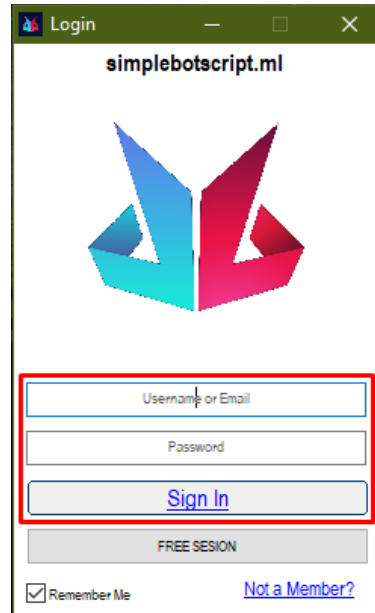
SYSTEM SETUP

- ✓ Have Windows 10 (Not W7 or W8, etc)
- ✓ Set Windows scale 100%
 1. Right click in desktop
 2. Click "Configuration in screen"
 3. Here change the scale, usually its 100%, but in some cases its in 125%

IMPORTANT – IN CASE YOU HAD TO CHANGE THE WINDOWS SCALE YOU WILL NEED RESTART THE GAME TO LET WINDOWS CALIBRATE AGAIN.

LOGIN TO BOT

- ✓ **Premium Access.** You need an account and buy premium in the website.



simplebotscript.ml

Username or Email

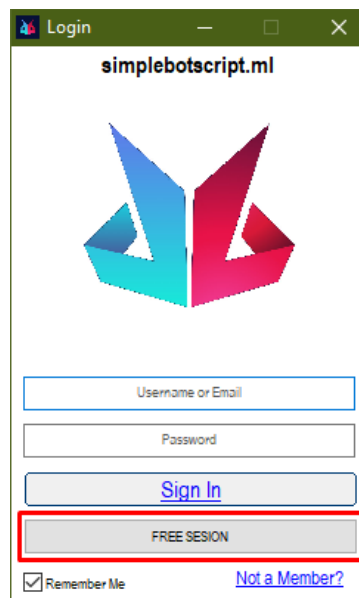
Password

[Sign In](#)

FREE SESSION

☒ Remember Me [Not a Member?](#)

- ✓ **Free Access.** No need an account, limited to 8 min in a row, then you need restart.



simplebotscript.ml

Username or Email

Password

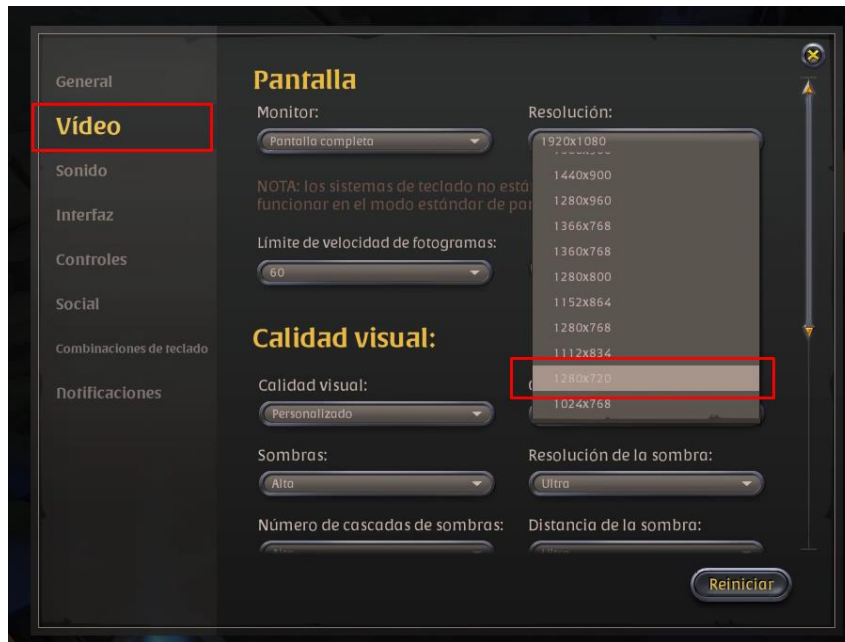
[Sign In](#)

FREE SESSION

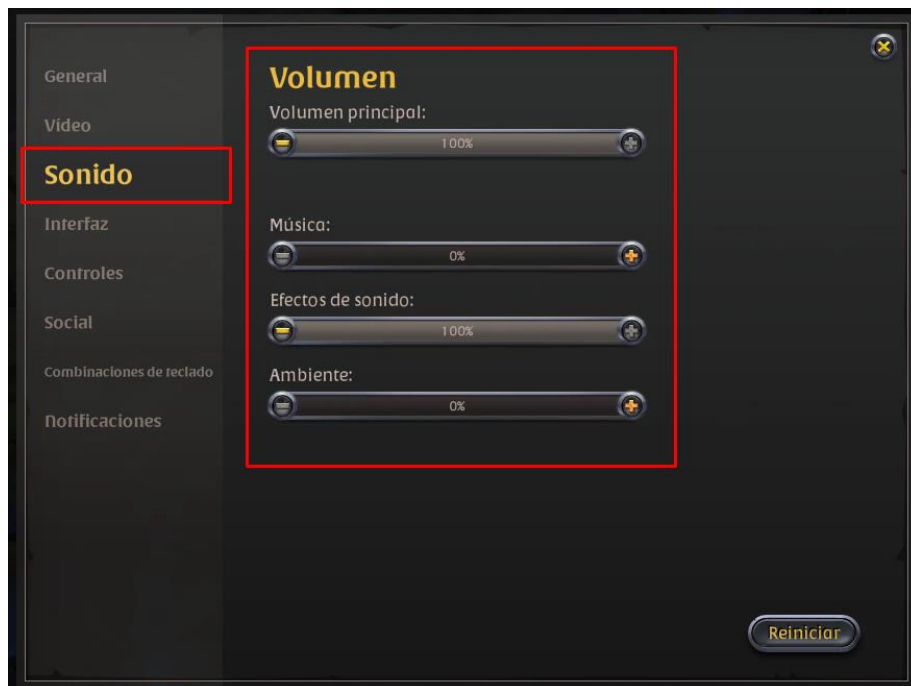
☒ Remember Me [Not a Member?](#)

GAME SETUP

- ✓ Game resolution 'Window mode' – 1280x720

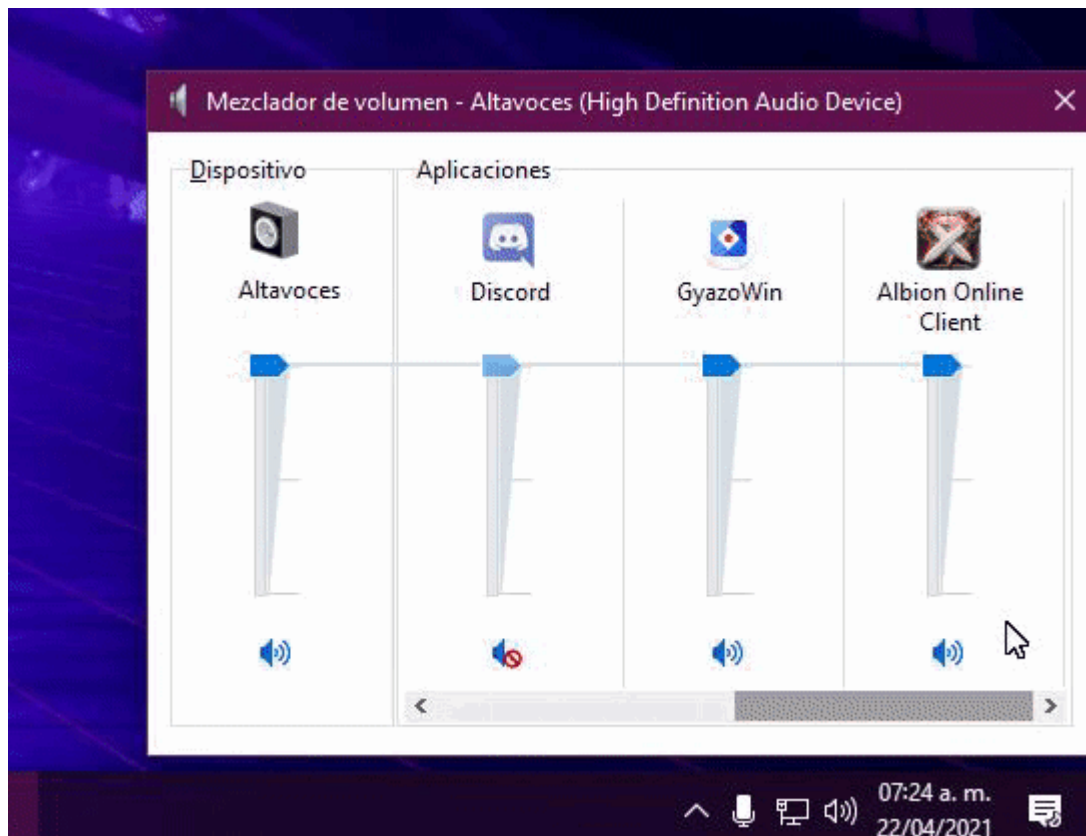


- ✓ Sound exactly as the picture 100/0/100/0%



BOT SETUP

- ✓ Open volumen mixer, **Albion volumen must be visible in all moment.**

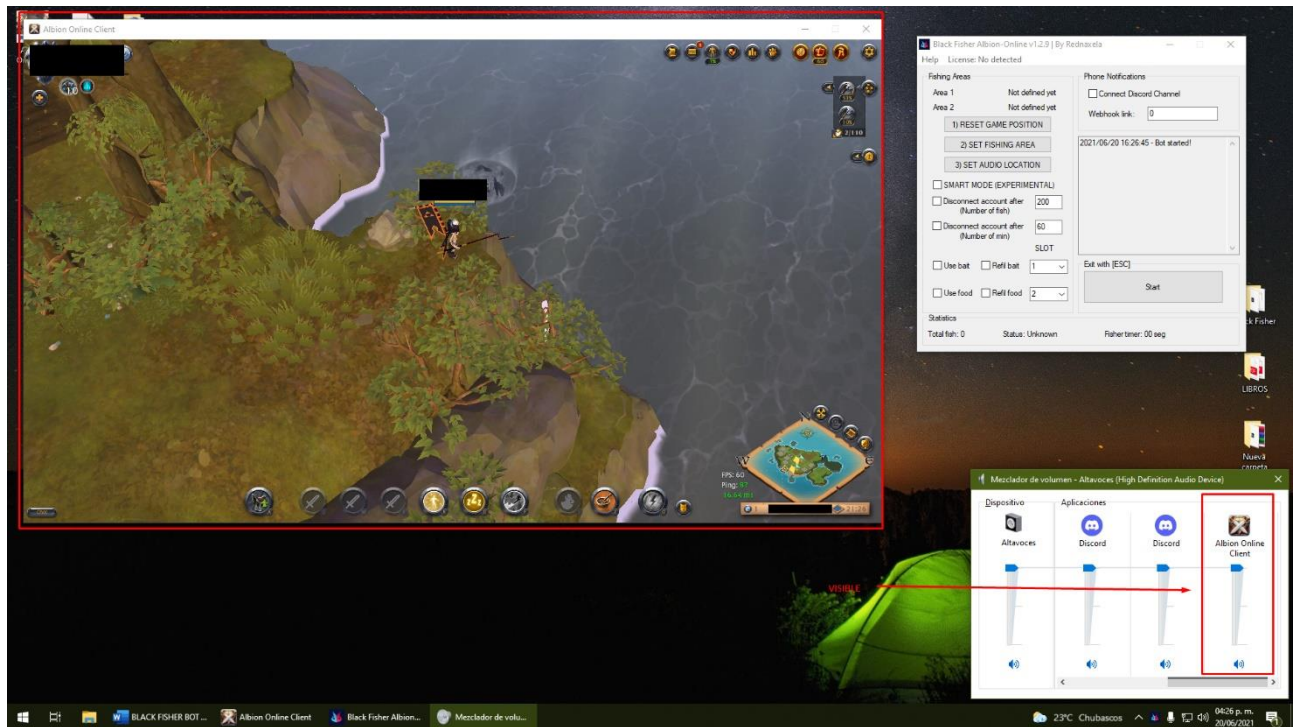


IMPORTANT – IN CASE SOUND ITS NOT DISPLAYING THE GREEN WAVES YOU MUST DO THE NEXT STEP.

1. Search in the windows bar "Advanced settings"
2. Click "configuration"
3. Then let windows choose. / Save.



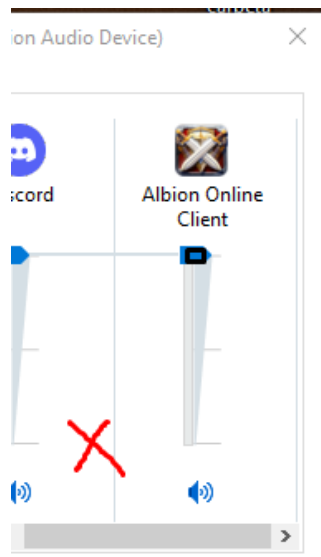
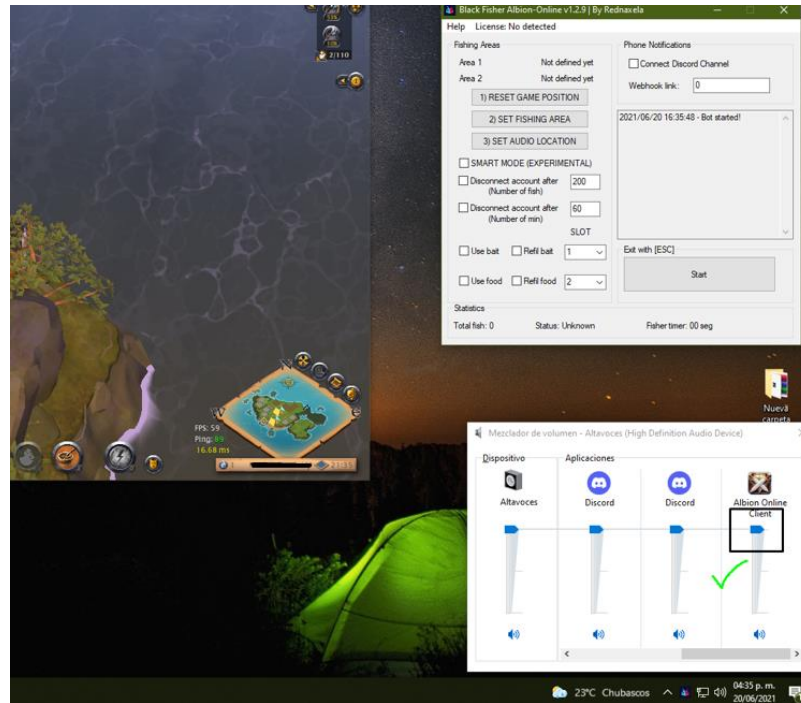
- ✓ Click "RESET GAME POSITION" – This Will move the game to the top-left.



- ✓ Click "SET FISHING AREA" – You dont need click, just place the mouse and press Z making a rectangle. Press Z again to save the second coordinate.



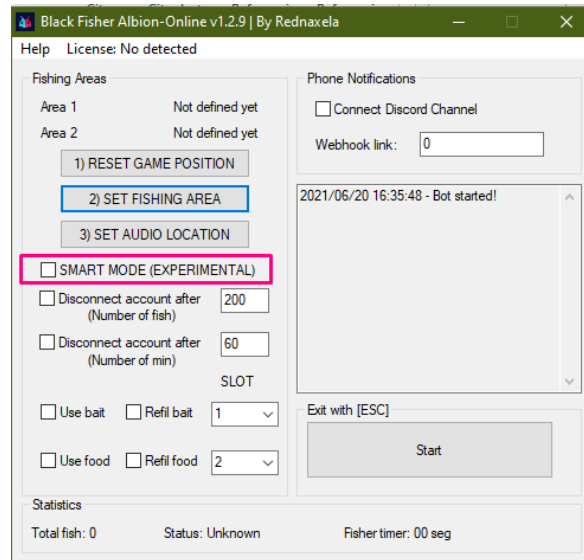
- ✓ Click "SET AUDIO LOCATION" – Wherever you have the volumen mixer with albion volumen, **make a rectangle exactly as the next image.**



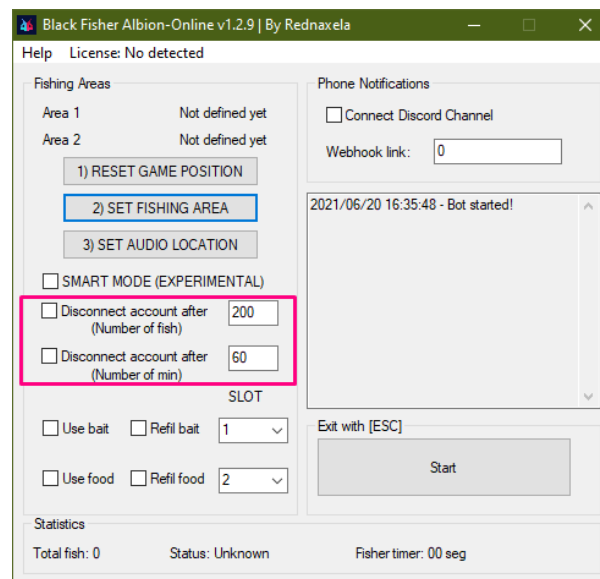
- ✓ **CLICK START!**

EXTRA SETTINGS

SMART MODE. Do not work for everyone its an experimental function. Cancel minigame when detect its Wood or rock.



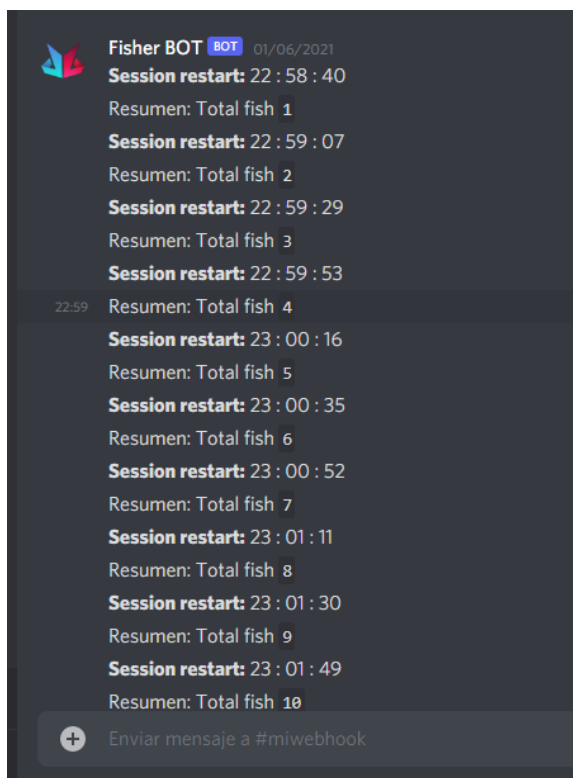
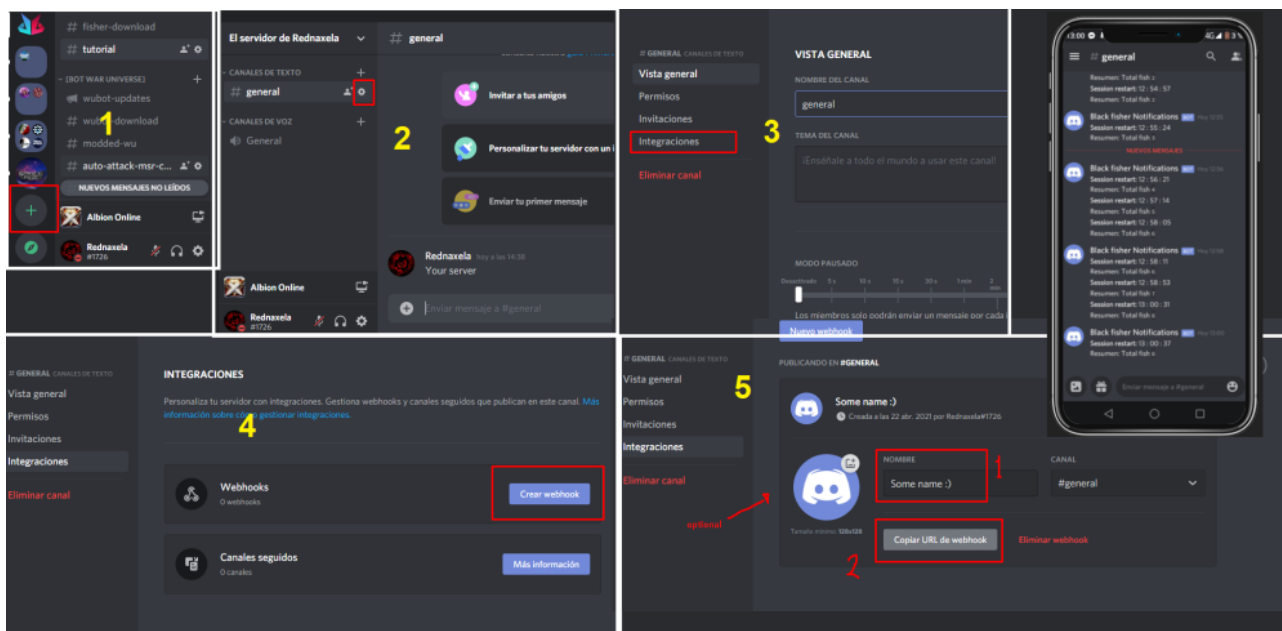
DISCONNECT OPTIONS. Simple, diconnect you when you reach X number of Fishes or minutes. Dont forget you have to enable the checkbox.



BAIT AND FOOD / SLOTS. First usage of bait and food its manual, after 10 fishes and 30 min BOT Will continue for you. **REFIL SLOT** its very important make sure you select it correctly. Check the following image.



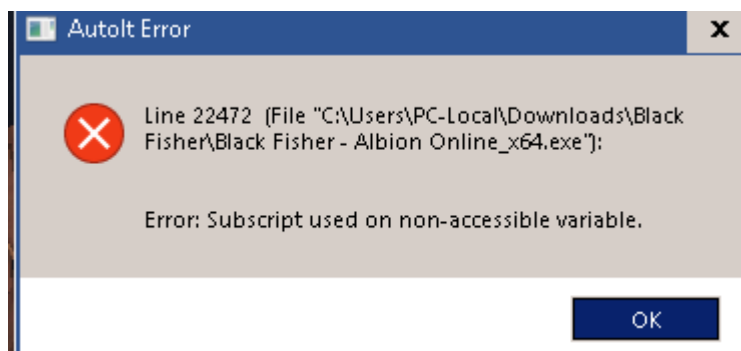
PHONE NOTIFICATIONS. If you download discord in your phone you can track all the info made by the bot.



VARIABLE ERROR

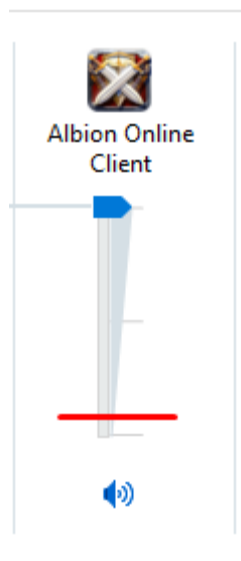
It is quite common to get this error, and it is due to a wrong configuration of the previous steps. Most often related to the audio zone, just check again the tutorial.

You can always contact in discord or Facebook for help.



CONFUSION SOUND

If your zone generate sounds bigger that this level, then you need search a new spot. Its going to be getting confusion with sounds all the time. Usually the best place its **black zone**. Avoid yellow and blue zones for player reports.



Good Luck!

2021 © SIMPLEBOTSCRIPT.ML

Developed by Rednaxela